

EYE ON IEI



**INFRASTRUCTURE
ENGINEERING** | INCORPORATED

CORPORATE DEVELOPMENT

Leadership Transitions: IEI Announces Appointment of Kashif Khan as President of the Firm



Mr. Kashif Kahn, PE

On August 26th, Mr. Kashif Khan, PE assumed the role of President of IEI, succeeding Mr. Michael Sutton, PE, who served as President and CEO since purchasing the company in 1997. Mr. Sutton will remain Chief Executive Officer. Mr. Khan will be responsible for day-to-day operations, providing oversight of all functional departments within its six offices nationwide. He brings a wealth of experience in project delivery, client relations, and business operations. Mr. Khan joined the firm in 2006 and in 2011 became a shareholder and a principal at the firm. [Read More](#)

Mr. Ken Smorynski, PE, SE was promoted to Vice President, Chicago Operations Leader, overseeing design, program management, and construction inspection staff for all Chicago-area projects. For the last eight years, IEI and our clients have benefited from the depth of Mr. Smorynski's experience. His management style has allowed him to cultivate a cohesive, highly capable team in the Chicago office that delivers creative solutions for our growing roster of clients and partners. "I am excited about this new role and helping to further grow and develop our Chicago office. We have a number of great existing projects and future opportunities to support IEI's mission to transform and enrich our communities." [Read More](#)



Mr. Ken Smorynski, PE SE

Mr. Aaron Patterson, PE, who joined IEI in 2012 was promoted to Design Group Manager of IEI's Chicago Office. Mr. Patterson's tenure at IEI has included several complex projects, most recently serving as the CDOT Aldermanic Menu Program Manager since 2019. Mr. Patterson will now be responsible for managing the firm's civil and structural design engineers, while still overseeing the design and coordination of several projects. He will mentor the next generation of IEI engineers and share knowledge of industry standards and best practices. [Read More](#)



Mr. Aaron Patterson, PE

Mr. Damiel Cox, EIT, will assume the role of Assistant Program Manager for the City of Chicago's Aldermanic Menu Program, which delivers \$75M of infrastructure improvements annually to all wards in the city. This CDOT program is managed by C*NECT, a joint venture partnership between IEI and Civiltech Engineering. Mr. Cox's promotion is the outcome of the successful C*NECT Mentor-Protégé program that is designed to prepare firms and individuals for larger roles in the future. This program is one example of IEI's commitment to providing all employees with opportunities for growth and career advancement within the organization.



Mr. Damiel Cox, EIT

Firm Grows to 100+ Employees; IEI Welcomes Human Resources Director, Stephanie Coleman

IEI has experienced consistent and significant growth in recent years - a trend that is anticipated to continue. To keep step with the increased demand for our work, we have been actively recruiting new talent. In the first half of 2021, IEI brought on more new employees than all of 2020. The employee base has grown to more than 100 engineers and administrative staff across all offices.

This fast-paced recruitment and on-boarding cycle is being managed by H.R. Director, Ms. Stephanie Coleman who joined IEI in early 2021 to spearhead the Human Resources segment of the firm's national strategy and manage IEI's essential HR functions.

Ms. Coleman is leading the HR implementation of several strategic planning macro initiatives to provide IEI with a winning edge in the recruitment of talent.



Ms. Stephanie Coleman

- Employer of Choice
- Talent Management Model
- Future Work Trends/Remote Work
- Firm Differentiation
- Performance Management Model

Ms. Coleman holds a Bachelor of Science (B.S.) in Mechanical Engineering from Tennessee State University, a Master of Science (M.S.) in Industrial & Labor Relations from Loyola University Chicago, and a Juris Doctor (J.D.) from Loyola University Chicago School of Law.

FIRM UPDATE

We Are Expanding! IEI Opens Two New Offices in 2021: Detroit, MI and Trenton, NJ

Infrastructure Engineering Inc. (IEI) is expanding operations in the midwest and northeast regions with the opening of offices in Detroit, MI and Trenton, NJ.

IEI will now be able to offer its civil and structural engineering expertise to the state of Michigan and looks forward to partnering with both public and private organizations as a DBE-certified firm to deliver vital projects throughout the state.

With the opening of the NJ office, IEI plans to expand existing successful strategic partnerships throughout the region. IEI enters the New Jersey market as an MBE certified firm, offering additional qualified resources to support the work of the New Jersey Agencies.



[Click to learn more about our Detroit office.](#)

[Click to learn more about our Trenton office.](#)

IEI Applies **INGENUITY** to Illinois Tollway (I-88) Construction Management Project

In 2012, the Illinois Tollway launched the 15-year, \$14 billion “Move Illinois” capital program to improve mobility and access, relieve congestion, reduce pollution, and create new jobs throughout the region. The \$360 million Reagan Memorial Tollway (I-88) Repair and Improvement Project is part of this capital program.

IEI was contracted by the Illinois Tollway as a prime engineering consultant to provide Phase III construction management and engineering services (inspection and supervision) for on-call contract task orders for the I-88 Roadway and Bridge Rehabilitation Project, overseeing a \$43 million construction budget. IEI managed two primary task orders for this project.



The initial task order included mainline patching and rehabilitation, structure rehabilitations, ditch grading, drainage improvements, and miscellaneous safety improvements along 10 miles of I-88. The second Task Order, which is expected to be completed in Fall of 2021, encompasses the rehabilitation and improvement of an additional 5.5 miles of I-88, the removal of a deteriorated 3-span bridge over the Illinois Prairie Path, and the installation of a cast-in-place three-sided box culvert. IEI was involved in both the design and construction of this project.

A detailed inspection of the Reagan Memorial Tollway (I-88) Bridge over the Illinois Prairie Path revealed substantial deterioration leading to a recommendation for complete bridge replacement. Multiple structural alternatives were considered including superstructure replacement with substructure repair, complete replacement with a shorter structure (lowering the profile of I-88), and complete replacement with a single span structure eliminating the embankments under spans one and three. Long term, the most cost-effective solution was to remove the bridge structure and replace it with a three-sided pedestrian culvert which greatly reduces long term maintenance costs.



The site conditions made it critical for the entire team including the Tollway PM, the GEC, the Designer, the CM, and the contractor to coordinate activities in a way that minimized disruption to traffic on I-88, meet an aggressive schedule, and provide solutions that added value to the overall project. To meet these goals, it was determined that changing from a precast structure to a cast-in-place structure was the best approach. During the construction phase, several critical challenges were overcome.

Changing the access point to come from Diehl Road along the Prairie Path instead of temporary earthen ramps coming directly off the mainline I-88 significantly improved traffic maintenance and helped to expedite construction schedule. Wing walls and retaining walls were constructed simultaneously because of this change. Avoiding the overhead ComEd lines over the existing bridge without service disruption was the first challenge the team solved successfully. Solutions also had to be developed to address the limited access and room for concrete pours created by the position of the cast-in-place culvert under the existing bridge. The team was able to place concrete with a conveyor that was moved for each section of a pour and lifting the machine under the bridge and using outriggers on the concrete blocks.

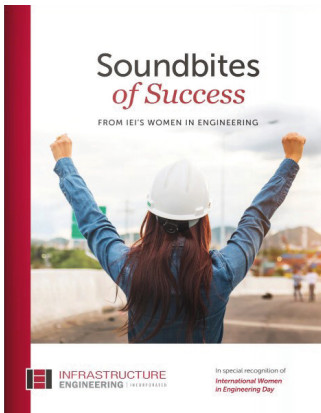
To open Prairie Path on time, a section of the framework was built on a sliding rail-ing system. After pouring the first section, the entire framework was pulled out and repositioned to pour the subsequent three sections, helping to save significant construction time.

The team performed an in-depth analysis of the construction sequencing and found a way to take advantage of the dry season. After constructing the south abutment, construction of north abutment was started, followed by the construction of the soil retention system in the middle portion of the existing bridge. Because of this change, the construction schedule gained 35 days of float.



By applying our signature **INGENUITY** to all aspects of this project, we were able to provide more scope within the same schedule, leading to greater value delivered. Construction of the pedestrian culvert was completed on time and within budget opening the Prairie Path to users on time allowing the Tollway to meet commitments to project stakeholders. IEI's team received a 4.26 of 5.00 (Exceeds Expectations) performance evaluation from Illinois Tollway for this project.

IEI Celebrates Women in Engineering Day



This year IEI celebrated Women in Engineering Day to shine a spotlight on the women who contribute to the success of our firm and the AEC industry. IEI has actively created a gender diverse environment and is proud that our organization includes women at all levels and across all departments.

IEI strives to increase the role of women in the AEC industry through our hiring practices and by supporting the next generation of women engineers and AEC business leaders through scholarships, internships, and community outreach.

IEI employees, like Lipji Moon, embrace the firm's position. Ms. Moon, a Project Manager in our Chicago office, was recently a mentor in the ASCE-IL Mentorship Program, providing guidance to an engineering student by helping her to explore her professional interests, grow her network, and develop her career. Ms. Moon echoed IEI's view of female engineers when she said, "Female engineers are detailed-orientated, passionate, and responsible. Girls can do

anything they want and become anyone they want."

We celebrate the knowledge, talent, and diverse perspectives that the women of IEI demonstrate daily in developing and delivering creative solutions to our clients. Learn more about IEI's talented women [here](#).

IN THE NEWS

IEI Demonstrates Commitment to Corporate Responsibility Through IEF

Since its founding, IEI has recognized the importance of giving back to the communities in which we live and work. Over the years, IEI has supported a variety of causes near each of our local offices through philanthropy and volunteerism. We believe that to be good corporate citizens, our giving efforts should grow in tandem with the success of our firm. To that end, we have recently formalized our commitment to the philanthropic arm of our firm by establishing the Infrastructure Engineering Foundation. As CEO, Michael Sutton stated, "The foundation is IEI's way of giving back to the community and industry. It is one way we prove that we care."

IEF is designed to facilitate our long-term corporate responsibility strategy, which will focus on four main areas: our workplace, our industry, our community, and our environment. The foundation will continue to support causes and initiatives that aim to create systemic change within our geographic footprint. [Read more](#)

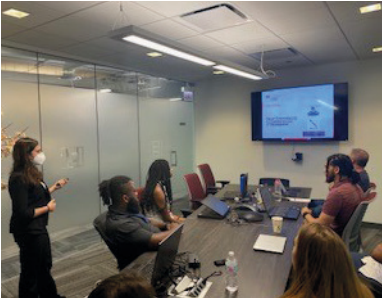


IEI Updates Mission, Vision, and Values Statement

We are growing, and as we engage with new employees and partners, it is vitally important to our continued success that we are unified around a common mission and vision that inspire us to live our corporate values and deliver our best work. IEI's Strategic Leadership Team has recently updated our corporate language to reflect who we are in this moment and to synthesize our aspirations for the future. The new language demonstrates a renewal of our commitment to all stakeholders - employees, clients and partners, and our local communities. [Read More](#)



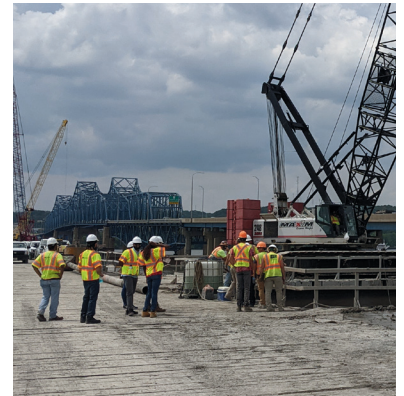
IEI Contributes to the AEC Industry with Summer Internship Program



This summer IEI welcomed ten students to experience what it means to work for a national civil engineering firm through our in-office summer internship program. Our Chicago, Indianapolis, and New York offices hosted seven aspiring engineers, and three interns who were interested in learning the business side of the firm worked with the Business Development, Marketing, and Human Resources teams. "It was great that we had the opportunity to come into the office and go to job sites. Most of my fellow students were limited to virtual internships this summer," said SIU-Edwardsville senior Keanu Rodriguez.

The interns participated in a rotation of projects varying between design and construction in order to provide them with exposure to multiple facets of civil engineering and experience working with multiple mentors. They contributed to live projects and were responsible for deliverables, developing MicroStation and Civil 3D skills along the way. The group of interns and their mentors even enjoyed a field trip to view the extensive construction project underway at McClugage Bridge in Peoria, IL. In her end-of-summer presentation, Katie Lev from Northwestern University commented, "The rotation system was so beneficial. The strongest attribute of IEI is the sense of community. Everybody was so eager to help us learn." "I've accomplished the goals that I set for myself at the beginning of this internship. There isn't enough time to talk about everything that I learned this summer," added Ahmed Idris from Bradley University.

IEI's President, Kashif Khan, PE offered parting advice to the interns on their final day, "Start thinking about the business aspect of engineering, not just the technical. It takes a holistic approach to be a successful engineer. Seek out classes that are not traditional engineering, like public speaking, accounting, and marketing. Your understanding of business and relationships will set you apart as you grow in your career." IEI looks forward to continuing the success of this program and welcoming a new group of interns in 2022.



In the Spring 2022 edition of **EYE on IEI**, we will share more news about IEI's plans for continued growth and the benefits for our clients and partners!

Stay tuned....

Transforming the Built Environment through
INGENUITY

Infrastructure Engineering, Inc. (IEI) is a multi-disciplinary consulting firm that focuses on the delivery of design engineering, program management, and construction engineering and inspection services. IEI cultivates various types of engineering projects from conception and planning through implementation. The firm's goal is to create the sustainable infrastructure necessary to build and connect communities, improve quality of life, and encourage economic development.

IEI is a DBE/MBE certified firm.